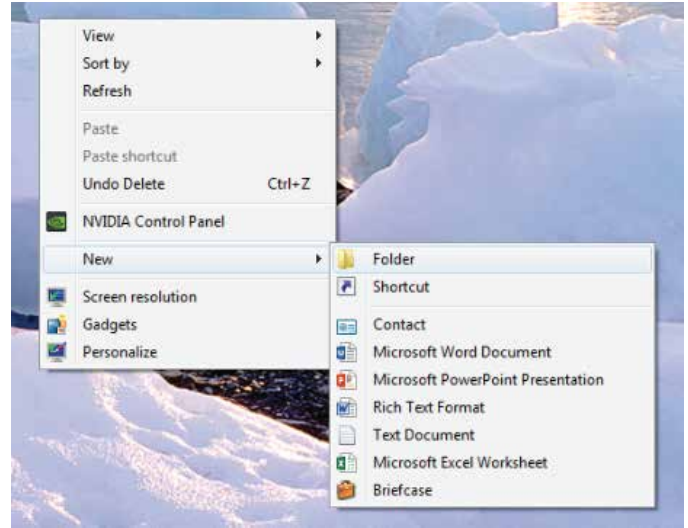
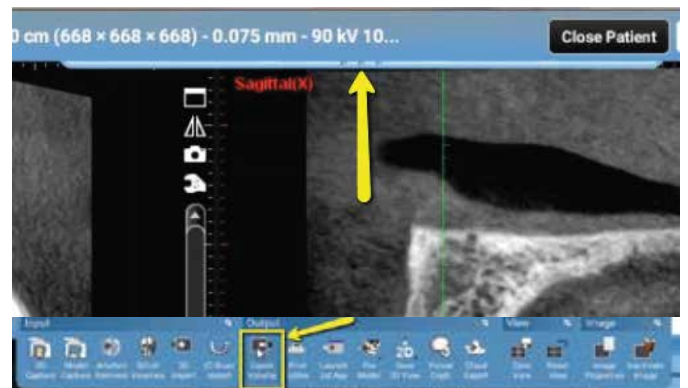


When exporting your Planmeca treatment plan, this will also include the multi-file DICOM. In addition to the treatment plan and multi-file DICOM, Implant Concierge will also require a diagnostic cast (a digital impression or a stone model). More information can be found at the bottom of the page.

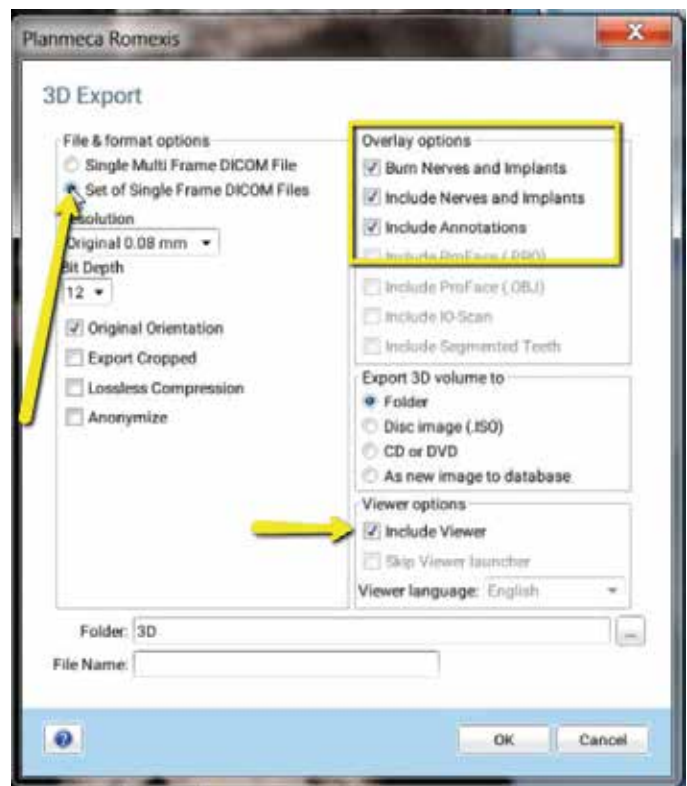
1 On your desktop, right-click on an empty space. Go to “New” and click “Folder”. A folder will appear with highlighted blue text. Type in the patient name and push “Enter” on your keyboard.



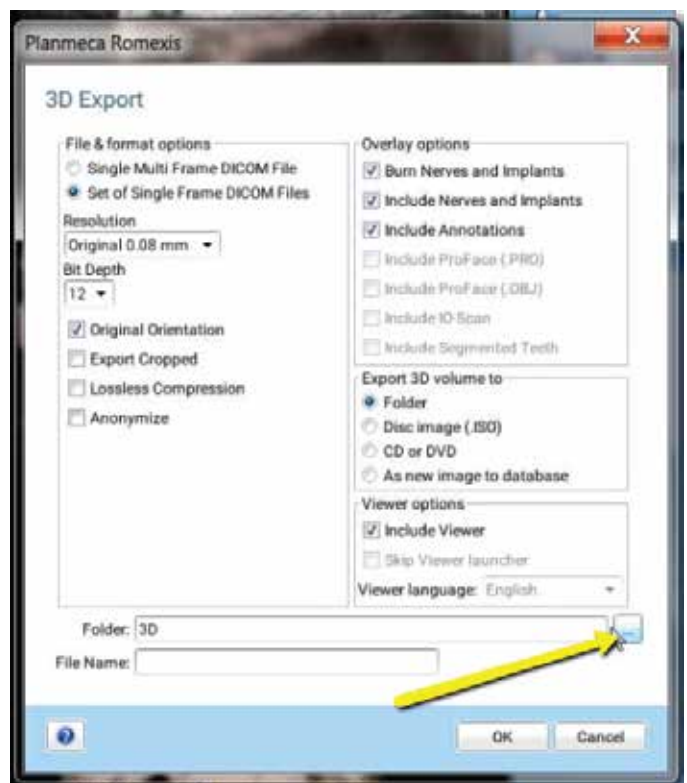
2 Once you have completed your treatment plan, hover over the drop-down menu. In the “Output” section, select “Export Volume”.



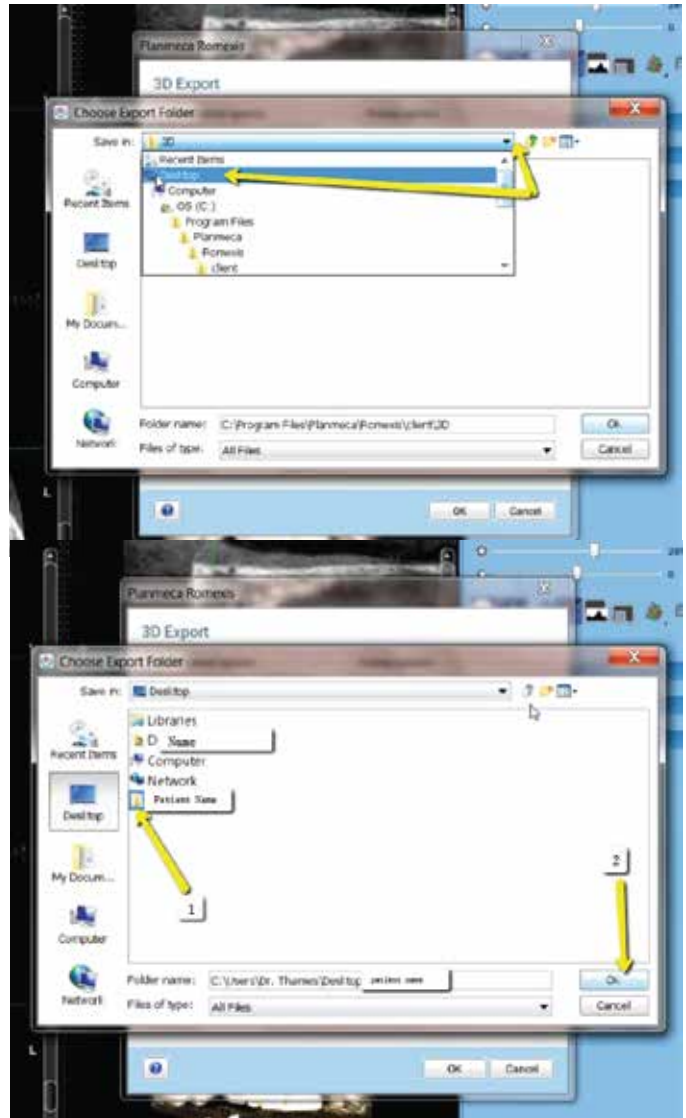
3 A pop-up box will appear. Select “Set of Single Frame DICOM Files”. Under “Overlay options” select “Burn Nerves and Implants” and “Include Nerves and Implants”. Under “Viewer options” select “Include Viewer”.



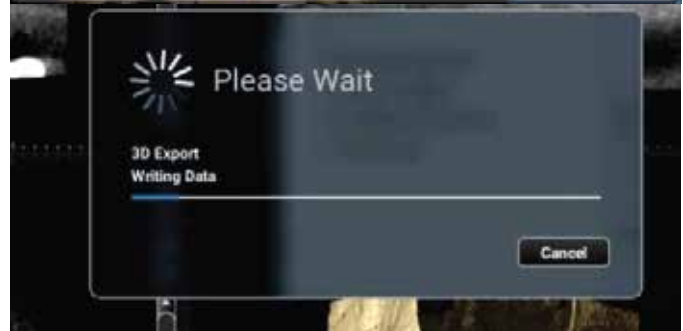
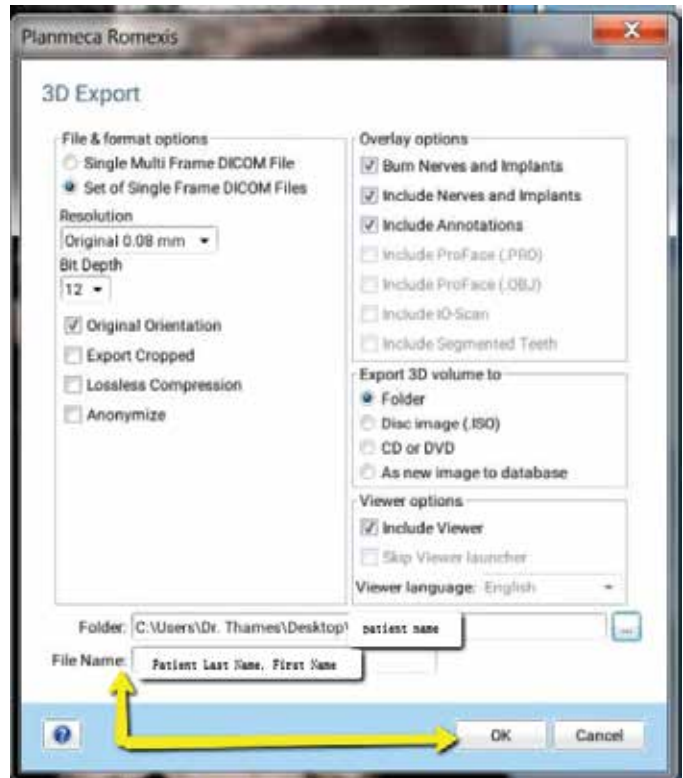
4 Click on the “...” button to choose where to files export to.



5 A second pop up box will appear. Go to the desktop, select the patient's folder, and click "OK".



6 The second pop-up box will disappear. Under the file name, type “Patient Last Name, First Name”. Click “OK”. Files will begin to export.



7 After the plan exports and saves, go back to the desktop, right-click on the patient’s folder, go to “Send to”, and select “Compressed (zipped) folder”. A duplicate folder will be made with either a zipper on it, or a blue “Z”.



8 To upload the compressed folder, login to Implant Concierge. Click on the patient's name to open the case. Click on the red "Upload DICOM" button.



9 Drag and drop the folder from the desktop to Implant Concierge. The file will automatically begin uploading.



10 Once the file reaches 100%,
click the green “Complete”
button.

